

MateriNex in Action

What's Next – 21 May 2026 – Vestar Antwerp

Johan Vangrunderbeek - Coordinator

 **MATERINEX**



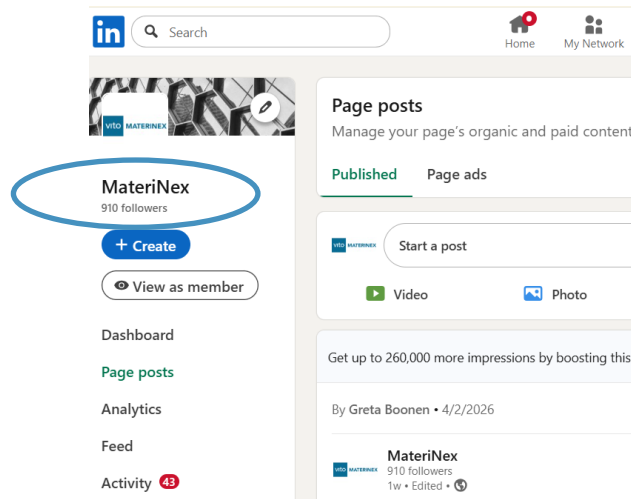
VLAIO

DEPARTEMENT
WERK, ECONOMIE
WETENSCHAP, INNOVATIE &
SOCIALE ECONOMIE

Community building 2024-'25

Flemish Associations and Common Interest Groups (CIG)

Association	High Level Representatives	Contact Persons
KU Leuven	Karel Van Acker	Sofie Vanreyten
UAntwerpen	Ann Aerts	Ann Aerts
UGent	Nele Debelie	Christophe Detavernier
UHasselt	Marlies Van Bael	Lieve De Doncker
VUB	Annick Hubin	Hugo Loosvelt



Companies

Research

Sector/branch
Policy agencies

CIG B&C	CIG BAT	CIG SKG
AC Materials	Alfa Ghewert NV	Aluminium Duffel BV
Academum B.V.	Academum Duffel	Aurubis Beersel
Aurubis Beersel	Aurubis	Belmet
B&C VZW	Becelec holding	Campine
BE&C nv	Bisalloy	De Rycke Gede NV
Betalon NV	Betalon	Indaver
Circular Concrete Center vzw	Miss Composites	RipYiron
Desmy NV	Desmy	Metalogic / TÜV AUSTRIA Belgium
De Rycke Gede NV	Zimexel B.V.	DCAS NV
FRBO NV	FRBO	Gemeral BV
FRON NV	Surface Measurement Systems	SOFTCOR
ITEX Services NV	IMECO	SWECCO
IEGS Laboratories	Imergem	TraceCycle
Isolover	TraceCycle	Umicore NV
Isolob Beton NV	Isolob NV	Vielka Environmental Services BE
Isopac C	Vielka Environmental Services	FootPower
Natural Masonry	YuPower	KU Leuven MAPS
Metalogic / TÜV AUSTRIA Belgium	KU Leuven CMACS	KU Leuven SeMPhR
Miss Composites	KU Leuven NUMA	KU Leuven SDVONET
NOCA NV	KU Leuven SCLINT	KU Leuven SCMM
Orbox	KU Leuven SeMPhR	Uantwerpen IPRACS
Pittsburgh Corning Europe NV	Uantwerpen ELGAT	Uantwerpen LADCA
Preface NV	Uantwerpen EMAT	Uantwerpen ENVECON
Reinforce BV	Agent COCOON	Ugent Metals Consortium
ReinforceFull	Phasselt DESINE	Uhasseel ACC
Salic Minerva	Phasselt Electrochemical Eng.	Uhasseel CMK
Shaffhout NV	ALB MSC	Uhasseel DESIne
Surface Measurement Systems	VSB M&E	VSB IM&IC
Structural Concrete Belgium	IMC	VITO ART
IMECO	VITO CAST	VITO ELEC
Imergem	VITO ART	Centebel TR&SM
Prasmet VZW	VITO ELEC	CRM
Improva NV	VITO TR&T	Sens
Intin BV	Centebel TR&ST	Agoria Vlaanderen
Vielka Environmental Services BE	SM group	Flanders Metals Valley (FMV)
Wienberger NV	Saris	Vlaanderen Circular
KU Leuven CSCE	Agoria Vlaanderen	De Brauwre Cluster vzw
KU Leuven Geology	De Brauwre Cluster vzw	VSDR
KU Leuven M&C De Nayer	Lu&O	EWI
KU Leuven M&C RUL	IMI	VLAIO
KU Leuven NUMA	VITO	
KU Leuven SCALINT	VLAIO	
KU Leuven SeMPhR		
Uantwerpen EMB		
Uantwerpen SuPAR		
Uantwerpen RG 1142 Hilde		
Agent Labo Maghel-Vandepitte		
Uhasseel Arck		
Phasselt CERIG		
Phasselt CMK		
Phasselt Eng M&A		
ALB MEMC		
VITO ART		
Belgisch Instituut voor Lastechniek vzw		
Sulfolite		
Centebel TR&SM		
SM		
ICW (Opleidingscentrum voor de Wiegenvbouw)		
Saris		
Agoria Vlaanderen		
Indaver		
Suena		
Eerstein Telescope		
EBE		
Isolob		
Isolob Beton Vert		
COM Limburg		
ALDR		
IMI		
VLAIO		

CIG	Chair	Co-chair	Companies	Research	Other
B&C	Koen De Rycke (De Rycke Beton)	Jan Desmyter (Buildwise)	36	23	11
BAT	Fanny Bardé (Solithor)	Annick Hubin (VUB)	17	19	6
SKG	Dirk Inghels (Aluminium Duffel)	Peter T. Jones (KU Leuven)	16	17	7

Open events (on location, networking)
Closed events – Letter of Commitment

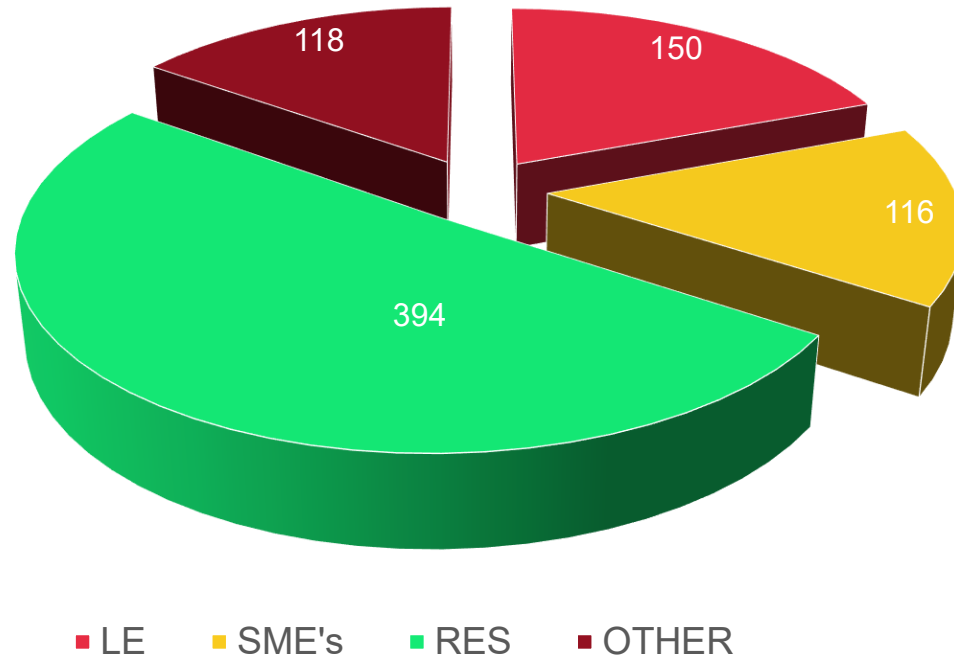


DEPARTEMENT
WERK, ECONOMIE
WETENSCHAP, INNOVATIE &
SOCIALE ECONOMIE

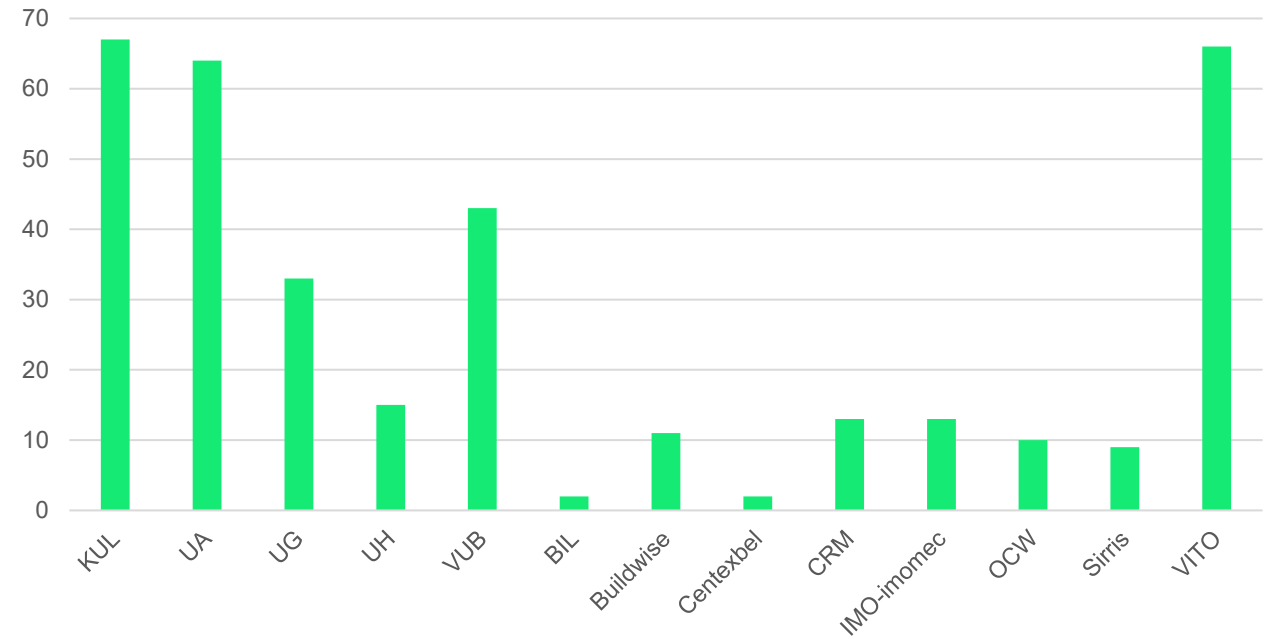
Community building 2024-'25

Events

Participants all events 2024-25



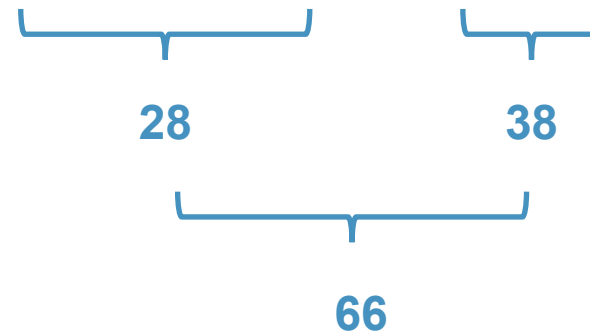
Participants from RESEARCH ORGANISATIONS
(all events 2024-25)



Impact

Project portfolio

Project		Ecosystem	Project partners				Industrial Advisory Board			Funding
Name	Type		Research Institutes	LE	SME	Subcontractors	LE	SME	Other	
bETon	ICON	B&C	3	5	1	5	5	4	6	2.717
DOC-CEM	cSBO	B&C	2	na	na	na	5	2	2	2.047
BEAM	cSBO	B&C	3	na	na	na	5	4	1	1.538
Cuality	ICON	SCRM	2	4	0	2				2.096
DELICOUS	cSBO	SCRM	2	na	na	na	4	4	1	1.535
CRYOSTAT	ICON	BAT + SCRM	2	0	3	8				2.593
PROCSIMO	cSBO	SCRM + B&C	2	na	na	na	3	2	0	1.454
			16	9	4	15	22	16	10	13.980



What's Next

cSBO call spring 2027



1 cSBO project/year (VLAIO HBC decision)



Focus on 'circular and resilient materials value chains'

Systemic impact on value chains
Strategic impact on supply chain
Involvement of Flemish companies with uptake potential



Timeline

January : launch (webinar)
End of March: deadline submission 4-pager + slide deck
Begin of April: jury (CIG companies)
Mid June: deadline submission full proposal

What's Next

Open ICON Call 10.2026 (budget 2027)



Launch October 2026: call modalities and criteria



Mandatory pre-application at least 2 months before full proposal submission

Fit with the call and roadmaps

Complementarity check with spearhead clusters

Compliance with ICON criteria (VLAIO)

OIM check: GO/NO GO (VLAIO)



Guidance by MateriNex innovation manager

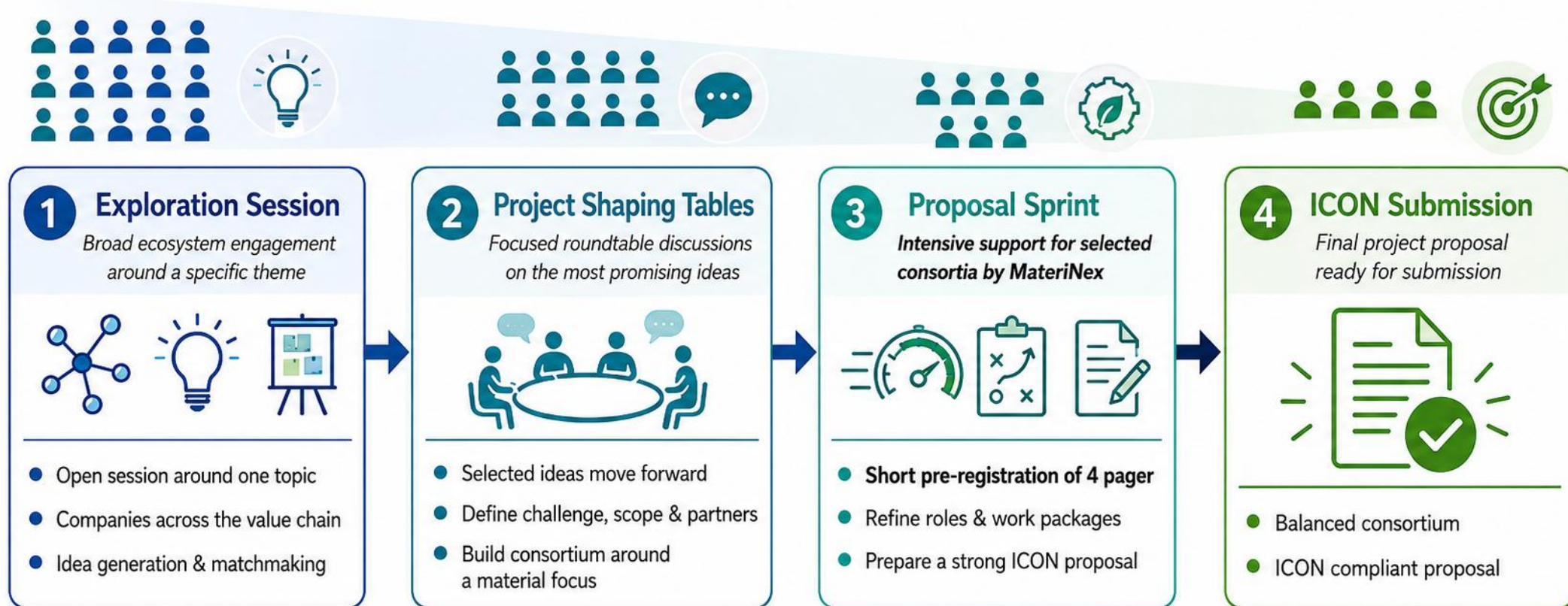


Full proposal deadline: end of June 2027

MateriNex Project Accelerator

From theme exploration to ICON submission

NEW



Goal: accelerate the path from promising materials ideas to high-quality ICON project proposals.

What's next

MateriNex Project Accelerator Building & Construction (kick off Autumn 2026): exploration sessions

Climate adaptive materials

- with Keymotion and VITO

Biobased materials

- with Earth Plant & Fiber & IBN Biomaterialis

Wood

- with Wood.be and Green deal lokaal hout

What's next

Update roadmaps



Building and Construction

from simply “product CO₂” to **whole-life approach**
greater prominence to **climate-adaptive and biomaterials**
digitalisation from “useful tools” to **compliance and adoption**



Batteries (now: targets on cell level)

More focus on **material families, interfaces, production/process materials, circularity and digital acceleration**



Strategic and Critical Raw Materials (now: technology driven)

more value-chain & systems-based

What's next

Re-allocation CIG chairs and co-chairs



New mandate 2nd half 2026 – '28



Procedure will be communicated soon

MateriNex as a service



Johan Vangrunderbeek
Coordinator



Luc Van Ginneken
Innovation Manager
Batteries
Strategic and Critical Raw Materials



Marijke Jacobs
Innovation Manager
Building and Construction



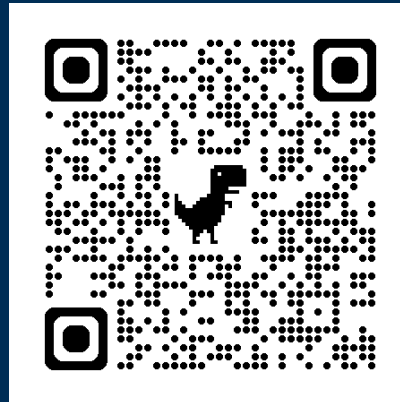
Ria Bruynseels
VLAIO Account Manager MateriNex



Greta Boonen
Community Manager

Thank you for joining us today!

Visiting address:
Roderveldlaan 5
2600 Berchem, 1st floor
<https://materinex.be>
info@materinex.be



vito **MATERINEX**



VLAIO

DEPARTEMENT
WERK, ECONOMIE
WETENSCHAP, INNOVATIE &
SOCIALE ECONOMIE